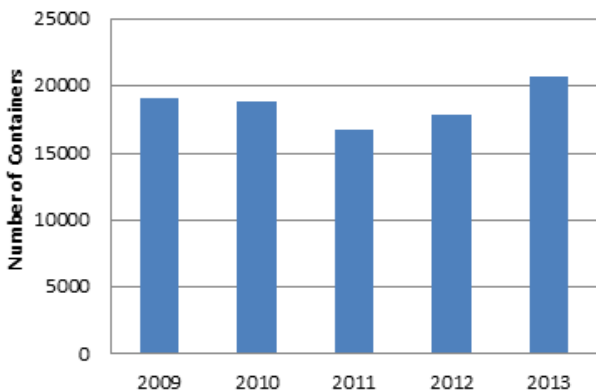


Environmental Health and Safety 2013 ANNUAL REPORT

Just the Facts

A PATHWAY FOR PROPER DISPOSAL

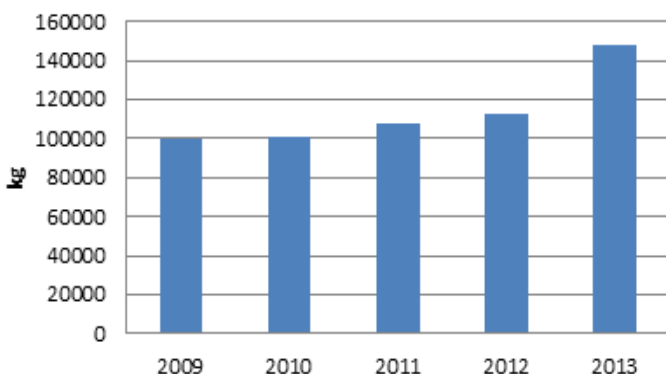
The number of hazardous waste containers hit a **five year high**. Since 2010, over **170,000 fluorescent lamps and 81,000 lbs. of light ballasts** have been recycled.



FIRED UP FOR RESEARCH SECURITY

The Veterinary Medicine Incinerator allows researchers to work with pathogens, unapproved pharmaceuticals and new feed additives without having to arrange for off-site transport and disposal.

Waste incineration increased 31% from 2012 and still saved \$137,000 over off-site disposal.



GET THE "LED" OUT

The lab equipment disposal program supports campus sustainability efforts by

recycling and reusing unwanted equipment when possible, and supports ISU's relationship with the community as a "good neighbor." **Lab equipment recycling increased 58% in 2013.**

KEEPING SOIL IN ITS PLACE

Keeping soil on site and out of our local streams and rivers protects water quality and improves our outdoor experience. In 2013, EH&S completed **551 stormwater inspections** at 14 construction sites, preventing **58 tons of soil** from entering our drinking water.



PEOPLE, ANIMALS, CARE.



Each month, EH&S staff **evaluate approximately 50 Institutional Animal Care and Use Committee protocols** for health and safety concerns such as exposure to chemical, physical, biological, and radiological hazards.

OUT WITH THE OLD

EH&S is celebrating **25 years of oversight** of asbestos abatement projects at State of Iowa Board of Regents Institutions.

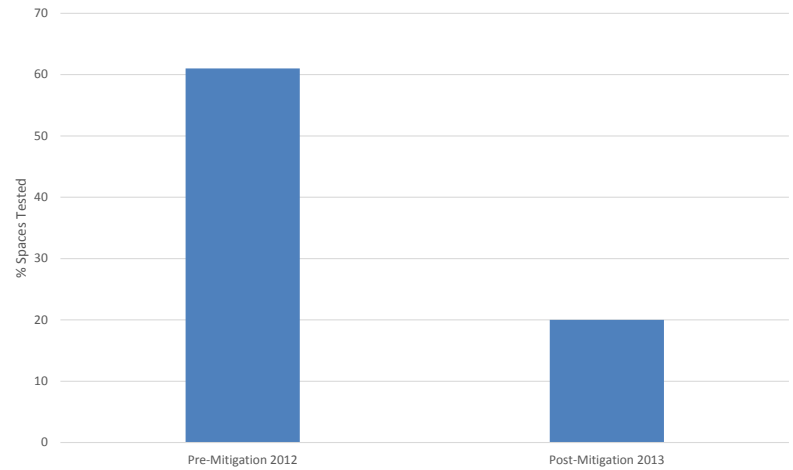


BREAKING THE MOLD

On-site moisture and mold characterization and assessment **streamlines response and project time** needed to return compromised space back to use. EH&S **visited 69 sites** and **saved an estimated \$14,820** over hiring consultants. Our mission? **Clean, safe and dry.**



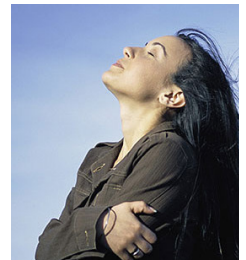
PREVENTING RADON EXPOSURE



In 2012, elevated radon levels were discovered in the Frederiksen Court student apartments. Remediation and post mitigation sampling occurred in 2013. Follow up testing demonstrated that mitigation efforts **significantly decreased radon levels**. To date, **1,045 radon tests have been completed** in Frederiksen Court.

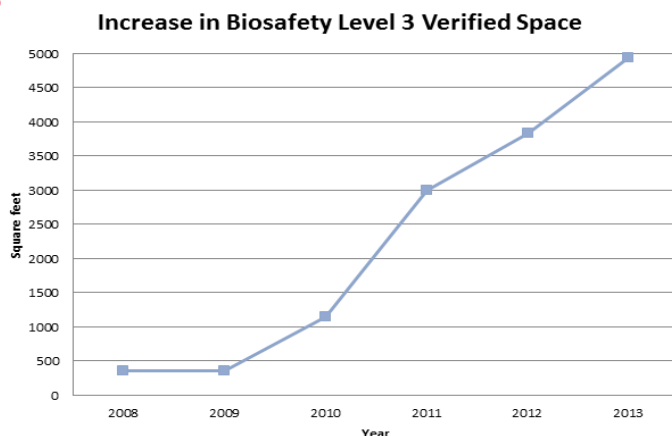
SAFE AIR TO BREATHE

EH&S performed annual **certifications on 1,220 active fume hoods**. Hoods that fail the process are repaired by Facilities Planning and Management and then recertified.



DISEASES DON'T STAND A CHANCE

EH&S **supports emerging disease research** by participating in the design, construction and verification of new high containment space. 2013 continued to show an **increase in Biosafety Level 3 verified space**.

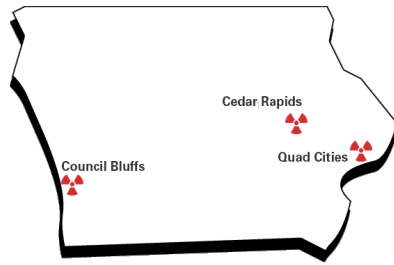


PROTECTING OUR MOST VALUABLE RESOURCE

The Occupational Medicine Program provides medical surveillance services for over **2,250 ISU employees** with potential exposure to job related hazards. In 2013, **1,063 new hazard inventories** were completed by employees. Of these, **631 required job hazard evaluations**. As part of the Association for Assessment and Accreditation of Laboratory Animal Care review, **822 people were identified** who met the requirements for the Animal Activities Hazard.

RAD READY

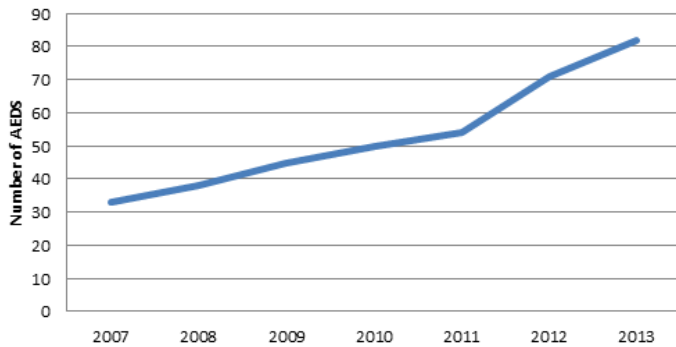
Twelve EH&S staff served the Iowa Homeland Security and Emergency Management



Department by participating in **seven radiological emergency response drills** and **three** Federal Emergency Management Agency or Institute of Nuclear Power Operations graded **exercises**.

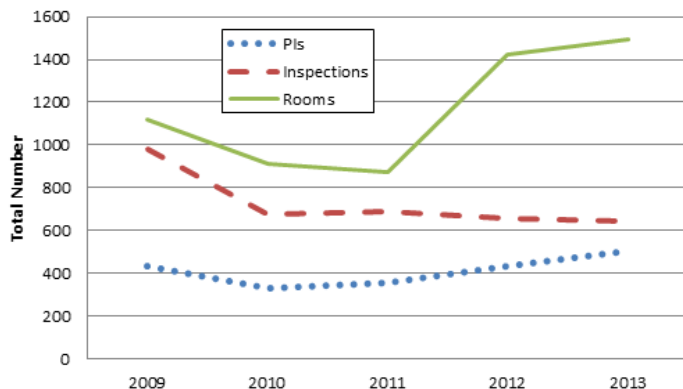
START A HEART, SAVE A LIFE.

Since 2006, **4 lives have been saved** through the use of Automatic External Defibrillators (AED). EH&S staff coordinate the placement and maintenance of **82 AEDs** in campus buildings.



AN EXTRA SET OF EYES

The Laboratory Safety Survey Program was **streamlined** to provide a more focused service to campus personnel. EH&S **visited 98%** of Principal Investigators in 2013.



TAKING INVENTORY, REDUCING HAZARDS

The Chemical Inventory System was **streamlined**, making it **easier** and more **efficient** for campus personnel to submit their workspace chemical inventory.

PROVIDING TOOLS

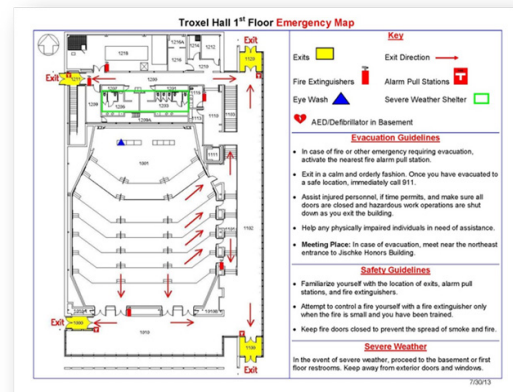
Over **1,200 students and staff** completed the Shop Safety Fundamentals online course developed as part of the Shop Safety Enhancement Learning and Training infrastructure initiative. EH&S also developed



10 tool box talks and **74 equipment data sheets**, all of which are available on the EH&S website.

GIMME SHELTER

Emergency maps are available for more than **130 ISU buildings** on the EH&S website. These maps provide sheltering and evacuation information as well as alarm pull station and fire extinguisher locations to assist building occupants in times of crisis.



CALIBRATED EXCELLENCE

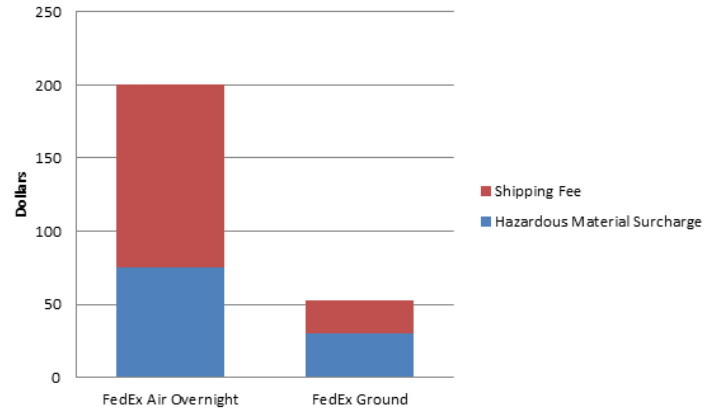
EH&S calibrates and lends monitoring equipment to our campus community, allowing for **minimal work disruption and reduced equipment costs.**

11 monitors were calibrated a total of **122 times** for use by the Department of Residence, Athletics and Facilities Planning and Management.



STAYING GROUNDED

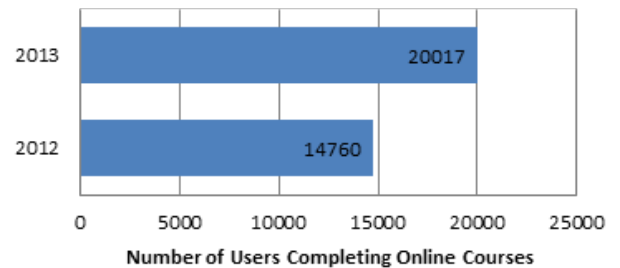
EH&S negotiated a contract to ship hazardous chemicals with FedEx Ground. Shipping rates with FedEx Ground are a **fraction of the cost** and the hazardous materials handling surcharge is about **half of the air rate.**



YOUR PORTAL TO THE WORLD OF SAFETY

The EH&S website connects users to publications, manuals, training courses, and the EH&S staff directory. Constantly **improving the user experience** and accessibility of our website led to a **102% increase** in unique visitor traffic to the site since 2012.

Safety Training Serves Increased Numbers



Top 5 Most Visited Publications

27,095



EH&S currently offers **40 online** and **31 classroom courses** for Iowa State University faculty, staff and students.

CHEAPER BY THE DOZEN

A charged extinguisher allows building occupants to escape, or fight a fire in its early stages. A quickly extinguished fire causes **less damage** and requires **less money for repairs.**

INSPECT



MAINTAIN



EXTINGUISH

